

Technical Specifications

Positioning Accuracy

Real time kinematics(RTK)	8mm+1ppm(Horizontal) 15mm+1ppm(Vertical)
Velocity accuracy	<0.02 m/s
Initialization Time	<10 s
Initialization reliability	99.9%

Performance

Pass to pass accuracy	±2.5cm
Work speed	0.1~20km/h
Work scene	Low / High speed, Straight / Curve Automatic U-turn

Physical

Operating Temperature	-30°C~+70°C
Storage Temperature	-40°C~+85°C

Electric Steering Wheel

Power input	12V~24V
Torque	6.2 N·m
Motor height	94.3 mm
Motor diameter	171 mm
Wheel diameter	380mm

GNSS Tablet

Size	10.1"
Resolution Rate	1280*800
Memory	2GB RAM (4GB is optional) 16G ROM (64GB is optional)
Operating System	Android 9
Waterproof and dustproof	IP66

Signal Tracking

GPS	L1, L2, L5
BDS	B1I, B2I, B3I, B1C, B2a, B2b
GLONASS	L1, L2, L3
Galileo	E1, E5b, E5a, E6, E5 AltBOC
QZSS	L1, L2, L5
NAVIC	L5

Communication and Data

Wifi/Bluetooth	Yes
Type C port	1
USB port	3
TF card slot	1
CAN port	1
Sensor Port	1
4G antenna port	1
7-pin Lemo port	1
UHF antenna port	1

All Farming Procedures



Ridging



Seeding



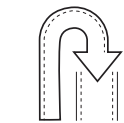
Spraying



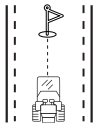
Harvesting



**SOUTH SURVEYING & MAPPING TECHNOLOGY CO., LTD.**  
Add: South Geo-information Industrial Park, No.39 Si Cheng Rd, Guangzhou, China  
Tel: +86-20-23380888 Fax: +86-20-23380800  
E-mail: mail@southsurvey.com export@southsurvey.com impexp@southsurvey.com gnss@southsurvey.com  
http://www.southinstrument.com http://www.southsurvey.com



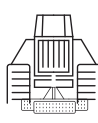
Automatic U-Turn



A Plus Heading



Rapid Installation in 30 min



Pass-to-Pass Accuracy ±2.5cm



More Stable & Reliable Signal



# SAG600 GNSS Automated System

The SAG600 is an automated steering system that uses a smart antenna. The system combines the advantages of convenient installation, high torque, high precision, low noise, and quick troubleshooting in a single package. GNSS+INS terrain compensation technology ensures 2.5 cm pass-to-pass accuracy on any terrain and provides superior performance for sowing, cultivating, trenching, ridging, spraying, transplanting, land consolidation, and harvesting. This system accommodates an extensive range of agricultural machinery, such as seeder, rice transplanters, sprayers, and harvesters.



## G7 pro Smart Antenna

- Full-constellation and multi-frequency tracking capability
- Compact size, Easy for installation
- IP67 waterproof and dustproof



## Electric Steering Wheel

- High-torque motor with nimble reaction and high stability
- Compatible to most tractor types



## P300 Plus Tablet

- 10.1" inch screen
- High resolution, sunlight readable, Android Operating System
- Rugged design with dust- and waterproofness, shock-resistance
- Integrated design, low latency

# Convenient Installation

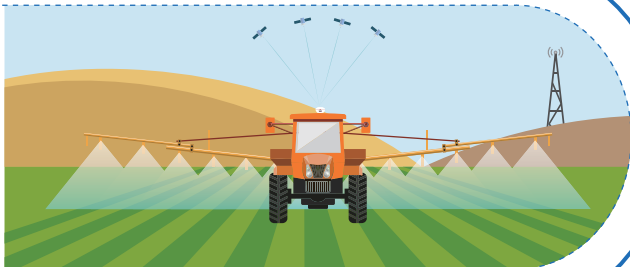


## Convenient Installation

With the integration of the smart antenna, SAG600's installation becomes a simple process, minimizing operational downtime in the field. Its user-friendly design allows for swift transferability between different tractors, showcasing unparalleled levels of versatility and adaptability.

## High Accuracy

SAG600 supports full-constellations tracking, including GPS, BDS, GLONASS, Galileo, QZSS. Enhanced by satellite-based differential services such as PPP B2b and HAS, as well as ground-based differential services like local CORS, it can achieve centimeter-level accuracy, reduce skips and overlaps.



## Multiple Functions

Multiple guidelines are available in SAG600 system, including Parallel straight lines, curves, A+Heading, and automatic u-turns, catering to different farming procedures. The utilization of combined GNSS+INS terrain compensation technology significantly enhances reliability. SAG600 accommodates speeds ranging from 0.1 to 20 km/h.

## User-Friendly Interface

The user-friendly interface simplifies configuration processes, enables swift task creation and activation of guidance lines, hence facilitating rapid, precise access to desired functions and uplift the using experience.



# Benefit



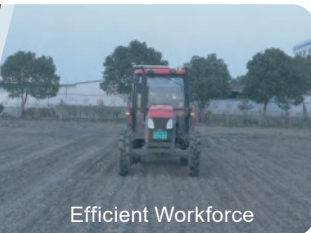
Quick ROI



Optimized Fuel Usage



Improved Productivity



Efficient Workforce